

# **THUNDERSTRUCK™** **AG EQUIPMENT**



## **BRUSH MOWER**

**Jenkins**  
IRON & STEEL

**OWNER/OPERATOR MANUAL**

**THE OPERATOR IS RESPONSIBLE FOR**

the safe operation and maintenance of the machine. It is important that anyone who uses the machine is instructed on safe and proper use. DO NOT use or operate this machine until this manual has been read and understood. If you require additional information, contact Jenkins Iron and Steel Inc.

**JENKINS IRON AND STEEL INC. RESERVES THE RIGHT TO**

make improvements in design or changes in specifications at any time without notice and without incurring any obligations to install them on units previously sold.

**OPERATION AND MAINTENANCE MANUALS ARE WRITTEN TO**

give the owner/operator instructions on the safe operation and maintenance of the product. For your safety and the safety of other persons, you must not operate, service, inspect or otherwise handle this equipment before you have reviewed and understood the Operation and Maintenance Manual pertaining to the attachment and the attachment carrier, hereafter referred to as "loader".

In order to get the optimum performance and efficiency that has been designed into this product, read this manual thoroughly before setting-up, operating, or performing maintenance procedures on the machine.

**THE USER IS RESPONSIBLE FOR**

inspecting the machine before use, and for having parts repaired or replaced when continued use of the machine would cause damage, excessive wear to other parts or make the machine unsafe for continued operation.

*Jenkins Iron and Steel cannot anticipate every possible circumstance that might involve potential hazard.*

*The safety messages found in this manual and on the machine are therefore not all inclusive. If an operating procedure, tool device, maintenance or work method, not specifically recommended, is used/ you must satisfy yourself that it is safe for you and others. You must also ensure that the machine will not be damaged or made unsafe by the procedures you choose.*

# GENERAL SAFETY INSTRUCTIONS

## READ AND UNDERSTAND ALL MANUALS PERTAINING TO EQUIPMENT BEING USED

Improper installation, operation, or maintenance of this equipment could result in serious injury or death. Operator and maintenance personnel should read all manuals associated with the equipment being used for their safety and the safety of those around.

## READ AND UNDERSTAND ALL SAFETY STATEMENTS

Read and understand all safety decals and safety statements in all manuals prior to operating any equipment. Know and obey all regulations, local laws, and professional guidelines. Note that the use of safety warning lights and devices may be required by local regulations.

## KNOW YOUR EQUIPMENT TO OPERATE SAFELY

---

Know your equipment's capabilities, dimensions, and operations before operating.

---

Keep all covers, guards, and shields in place when not servicing the equipment.

---

Always make sure that attachment is flat on the ground, hydraulic drives are disengaged, park brake is set and all motion is stopped before exiting the machine.

---

Never exceed the maximum recommended input power or speed specifications for the attachment.

---

Check to make sure all operating controls are in neutral before starting the engine.

---

Before adjusting or servicing the unit, make sure the machine is off and pressure is relieved.

---

Never modify equipment or use this attachment for purposes other than intended.

---

Never operate on terrain where rollover could occur.

---

Do not permit riders on equipment.

---

Work in a well-lit, level surface.

---

Never leave the equipment running unattended.

---

Keep all steps and surfaces free of dirt, grease, debris, and oil.

---

Ensure that all equipment is in proper operating condition.

## PERSONAL PROTECTIVE EQUIPMENT (PPE)

The use of protective clothing and equipment should be used at all times. Hearing protection, eye protection, and proper clothing should be observed to prevent accidents or impairments. The use of electronics or other devices may distract the operator, therefore resulting in severe injury or death and should be avoided.

## HIGH PRESSURE/HYDRAULIC FLUIDS

Hydraulic fluid under pressure can cause serious injury or death if it penetrates the skin. Seek medical attention immediately if this occurs.

---

Make sure that pressure is relieved before disconnecting and servicing hydraulic lines.

---

Always wear PPE when checking for leaks.

---

The use of paper or cardboard should be used to check for suspected leaks, not your hands.

# ROUTINE MAINTENANCE

It is the operators' responsibility to inspect the attachment and loader prior to use. The equipment should be free from damage, loose bolts, fluid leaks, and that all safety mechanisms are in working order.

## PRE-OPERATIONAL CHECKLIST

- 
- ☒ **Fluid leaks:**
    - Tighten fitting/part
    - Replace if necessary
- 
- ☒ **Loose hardware**
- 
- ☒ **Greased (8 grease zerk locations):**
    - Roller bearings (2)
    - Push arm pivot bushings (2)
    - Wheel spindle bushings (4)
- 
- ☒ **Hoses routed correctly**
- 
- ☒ **Check Safety Limit Switch for damage and proper function**
- 
- ☒ **Check blades for cracks or other damage. Replace if necessary; never sharpen**
- 
- ☒ **Cehck blade mounting hardware for proper torque (450 ft-lbs) and that cotter pins are installed on both blades and blade carrier**
- 
- ☒ **Check Lubrication level in gearbox. (EP80W-90 Gear Lube)**
- 
- ☒ **Thoroughly inspect lifting straps for signs of damage. Replace if necessary**
- 
- ☒ **Not to exceed 25 GPM (Gallons per minute)**



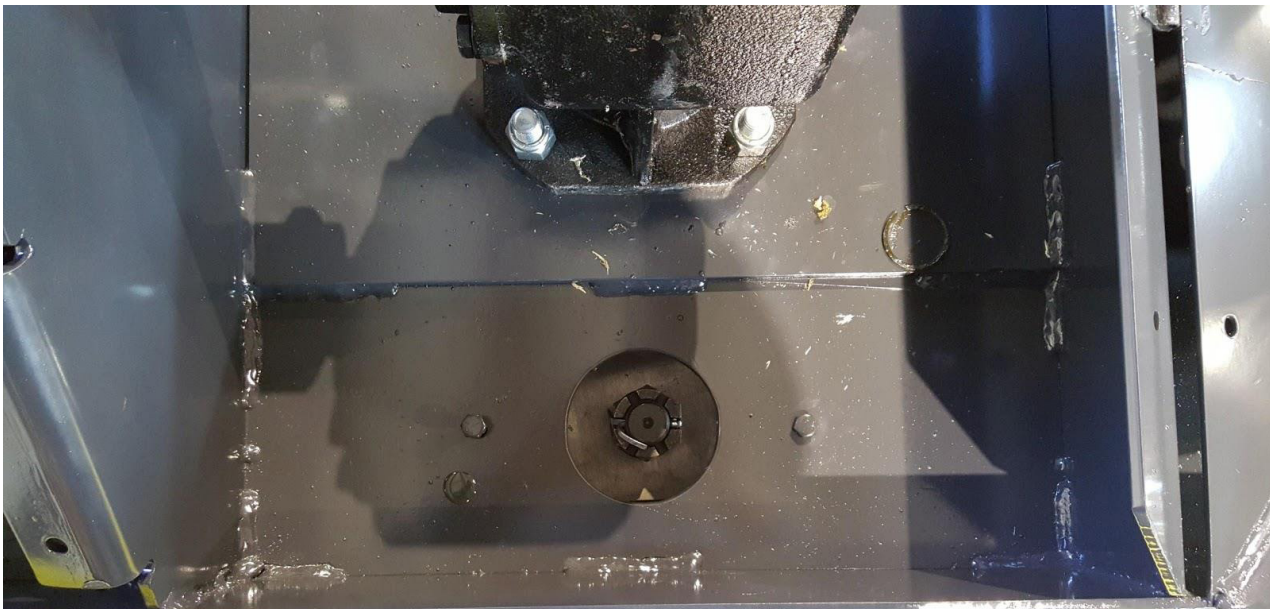
## GEARBOX FLUID CHECK AND FILL

- Position attachment on a level surface.
- Remove the Level Check Plug (A). Fluid should be level with the hole.
- Add gearbox oil (EP80W-90), if necessary, by removing Top Plug (B) and slowly filling gearbox until fluid is level with the Level Check Plug hole.
- Always check to ensure that all plugs are tight and cover put back in place after performing gearbox service.



*Fluids should be cleaned up and disposed of in an environmentally safe manner. Check with local, state, and federal regulations for correct disposal.*

## BLADE REMOVAL AND INSTALLATION



1. Disconnect the hydraulic couplers from the loader.
2. Position the mower deck so that the back of the mower is in the air and the front of the mower is securely on the ground.
3. Lock the loader arms.
4. Remove the cover.
5. Remove the plate to gain access to the blade mounting hardware.
6. Rotate the blade pan so the bolt is in alignment with the access hole.
7. Remove the cotter pin and nut. (Secure blade to prevent dropping blade when nut is removed.)

# **Jenkins** IRON & STEEL **LIMITED WARRANTY**

Jenkins Iron and Steel Inc. warrants each new machine manufactured by us to be free from defects in material and workmanship for a period of twenty-four (24) months from date of delivery to the original purchaser.

## **THIS WARRANTY DOES NOT COVER:**

Any product or component that, in the opinion of Jenkins Iron and Steel Inc., has been misused, modified in any unauthorized manner, altered, damaged, involved in an accident, or repaired using parts not obtained through Jenkins Iron and Steel Inc.

- Any cable, part that engages the ground, digging chain, bearing, teeth, blade cutting edge, pilot bit, auger teeth and broom brush that either constitutes or is part of the product.
- Normal maintenance
- Previously owned equipment
- Misuse, abuse, accidents or damage due to improperly routed hoses

In no event will the Sales Representative, Jenkins Iron and Steel Inc. or any other company affiliated with it or them be liable for incidental or consequential damages or injuries, including but not limited to the loss of profit, rental or substitute equipment or other commercial loss. Purchaser's sole and exclusive remedy being as provided here and above.

Jenkins Iron and Steel Inc. shall have the option to repair or replace a warranty product.

If requested by Jenkins Iron and Steel Inc., the alleged defective part or product shall be shipped to its manufacturing facility or other location specified by Jenkins Iron and Steel Inc. with freight prepaid by the claimant, to allow Jenkins Iron and Steel Inc. to inspect the product.

Claims that fail to comply with any of the terms and conditions shall be denied.

Jenkins Iron and Steel Inc. reserves the right to change and or add improvements at any time without incurring any obligation to make such changes or add such improvements to products previously sold.

**JENKINS IRON AND STEEL INC.**  
**22401 COUNTY 36 LONG PRAIRIE, MN 56347**  
**PHONE (855) 732-3843**



## **WARRANTY DISCLAIMER**

Thunderstruck Ag Equipment is a distributor of the products we sell and does not provide any direct warranty coverage. All warranty claims and coverage are provided solely by the product's manufacturer, according to their specific terms and conditions.

If you experience a product issue and believe it may be covered under warranty, please contact one of our sales representatives. We're happy to assist you in coordinating your claim with the appropriate manufacturer.